

CERTIFICATE OF LOCATION OF GOVERNMENT CORNER

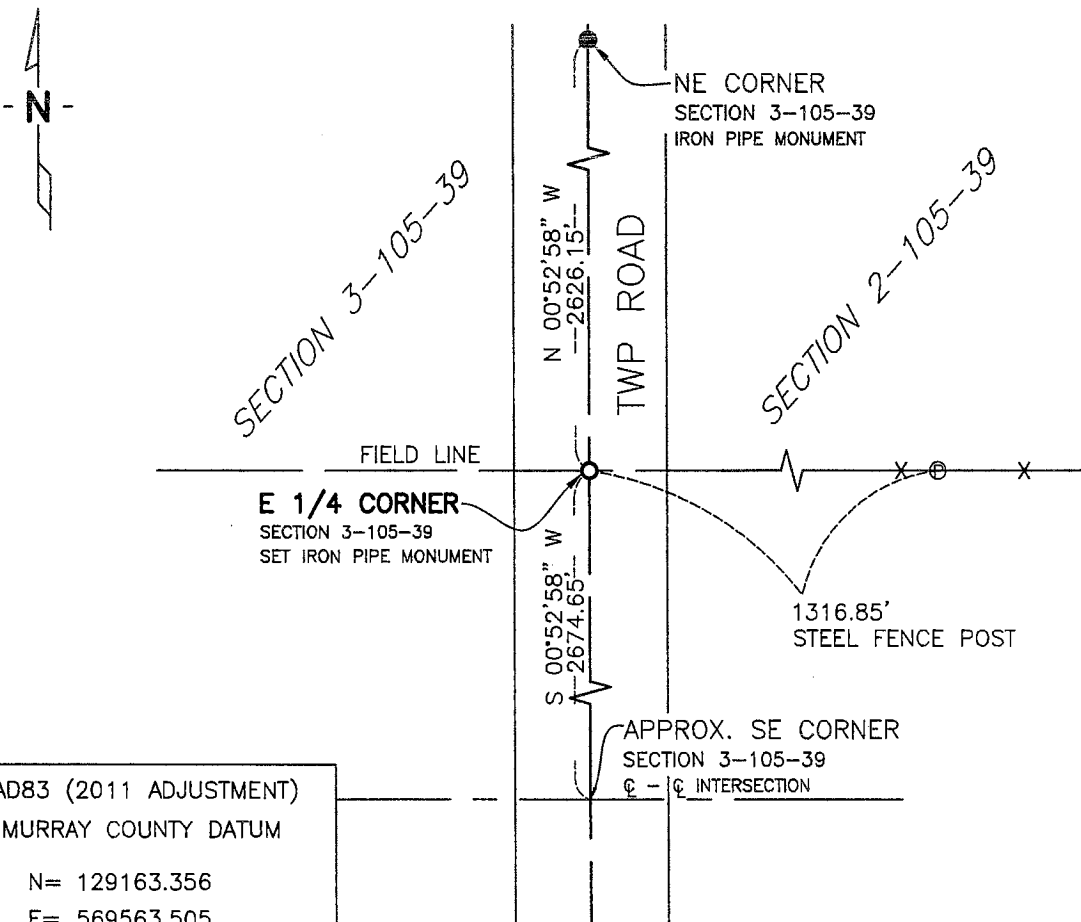
EAST QUARTER Corner of Section 3, Township 105 N, Range 39 W, 5th P.M.

STATE OF MINNESOTA, County of MURRAY

At the corner location shown on the sketch:

- On 5/10/13 found a NOTHING
DATE
- left monument as found, lowered monument, removed monument (explain)
- On 5/10/13 placed a 1/2" X 24" IRON MONUMENT 6" DEEP IN GRAVEL ROAD
DATE

SKETCH OF REFERENCE TIES



NAD83 (2011 ADJUSTMENT)
MURRAY COUNTY DATUM
N= 129163.356
E= 569563.505

I:\NRCS\M33106137\TASK 11 D JANS DES Murray Co\E 3-105-39.DWG

Statement of evidence relative to this corner location is on back of page.

I hereby certify that this document and the data contained herein was prepared by me or under my direct supervision.

Rory Jensen 9/11/2013
Rory Jensen DATE

- Registration No. 19789
- Land surveyor, Professional Engineer
 - County Surveyor, County Engineer

OFFICE OF THE COUNTY RECORDER

County of _____
I hereby certify that this document was filed in the Co. Recorders office at _____ M. on the _____ day of SEP 13 2013 A.D., 20____
County Recorder James V. Johnson
By _____, Deputy
DOCUMENT NO. _____

Statement of Evidence:

East Quarter Corner Section 3, Township 105 North, Range 39 West

- 1861 Original Government Land Survey was done by Wellman & Smoot, US Deputy Surveyors. At 40.10 chains he set quarter section post, drove charred stake and made mound with trench and pits as per instructions.
- Oct. 22, 1864 Found a survey in book at Recorder's Office for Section 2 done by B.W. Woolstencraft shows he set center of Section 2. He does not show what was found for West Quarter Corner, 39.84 from center.
- May 10, 2013 Bolton & Menk Inc. when doing a survey for NRCS Jans Easement Boundary Survey excavated a 10' wide hole at the location of the East Quarter Corner and found nothing. The crew set a 1/2" by 24' long iron pipe monument 6" deep at the East Quarter Corner of Section 3. Ties were taken and are as follows:
- Steel Fence Post - 1316.85 feet
 - NE Corner Section 3 - 2626.15 feet
 - SE Corner Section 3 - 2674.65 feet

Ties were placed on the corner and by GPS methods it was tied into the County Coordinate System NAD 83 (2011 Adjustment).

The evidence is not conclusive as to the true corner location, however the occupational and collateral evidence suggest that this is a reasonable location as to the corner. Additional information regarding the preparation of this certificate can be obtained by contacting: Bolton and Menk, Inc., Mankato, MN.